

Upholstery and finishes
Tapizeriak eta akaberek
Revêtements et finitions
Tapizados y acabados
—2018

www.alki.fr

alki



Wood



Natural Oak



Ash-grey Oak



White Valsain



Tourbe Oak



Carbon Oak



Black Valsain



White Stained Oak



Walnut Stained Oak

Fenix
Technical
Surface
→



White 0032



Gray 0718



Black 0720



Sand

←
Bioplastic

Fabrics



Luna 4704



Capture 5001



Crisp 4034



Europost 66119



Steelcut Trio 113



Crisp 4605



Europost 68072



Steelcut Trio 416



Capture 5101



Remix 962



Crisp 4201



Europost 60017



Remix 873



Canvas 414



Luna 4811



Remix 412

Fabrics



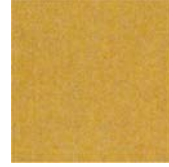
Steelcut Trio 453



Crisscross 1502



Luna 4101



Luna 4204



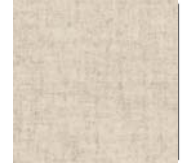
Remix 422



Crisp 4430



Crisp 4301



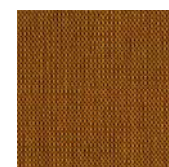
Luna 4006



Remix 612



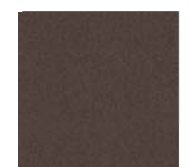
Luna 4301



Crisscross 01901



Capture 4301



Europost 61004



Remix 252



Steelcut Trio 515

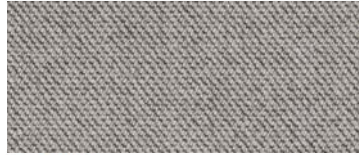


Europost 63004

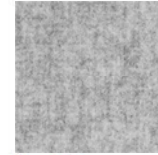


Europost 63070

Fabrics



Capture 4101



Luna 4013



Europost 61003



Crisp 4115



Molly 152



Luna 4009



Capture 4201



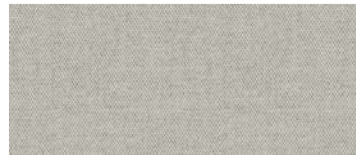
Molly 112



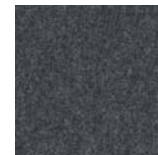
Molly 194



Crisp 4021



Molly 114



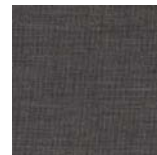
Luna 4012



Steelcut Trio 124



Remix 173

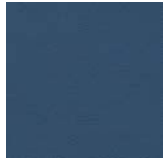


Canvas 154

Eco-leather



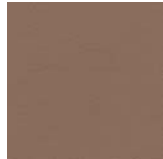
Palma Silver Grey



Palma NF Baltic



Palma NF Perle



Palma NF Smoke



Palma Mimosa



Palma NF Birke



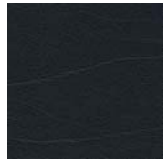
Palma Fango



Palma NF Antrazit



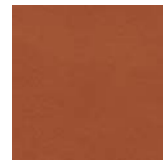
Palma Olivbraun



Palma NF Schwarz



Palma Lachs



Palma Whisky



Palma NF Inka



Palma NF Kenia

Leather



Gracia 945



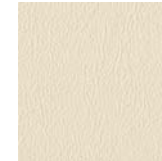
Gracia 930



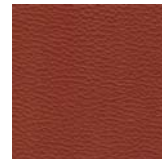
Gracia 950



Gracia 924



Gracia 929



Gracia 117



Gracia 927



Gracia 947



Gracia 902



Gracia 941



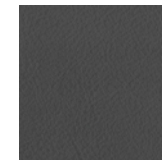
Gracia 925



Gracia 911



Gracia 903



Gracia 944



Gracia 908



Gracia 943

Technical information

		COMPOSITION	ABRASION RESISTANCE	FLAMMABILITY
GROUP 1	EUROPOST 2 by Gabriel	100% Wools of New Zealand	Rubs Martindale (EN ISO 12947-2) > 500000	EN 1021 162 / UNI 9175 class 11 EMME / BS 5852 Pt 1 s. O6 IMO MSC 307 (88) Annex 1 Part 8
	CAPTURE by Gabriel	85% Wools of New Zealand / 15% Polyamide	Rubs martindale (EN ISO 12947-2) 200.000	EN 1021 162 Cigarette and Match/ BS 5852 Part 1 Q1 Cigarette & match/ CA TB 117-2013 UNI 9175 Class1 IEMME
	REMI 2 by Kvadrat	90% new wool (worsted)	Rubs martindale (EN ISO 12947) 100.000	EN1021 1.2/ NFD60013/ BS 5852 part 1/ US Cal. US Cal. Bull. 117-2013
	CRISP by Gabriel	93 % Wools of New Zealand/ 7 % Polyamide	Rubs Martindale (EN ISO 12947-2) > 200.000	BS 5852 Part 1 Q1 Cigarette & match / EN 1021 162 / CA TB 117-2013 / IMO MSC 307 (88) An1 Part 8 / MED Certificate IMO / UNI 9175 Class1 IEMME
	PALMA by Skal (Eco-Leathers)	Approx. 89% PVC-compound / Approx. 11% CO-knitted fabric	Rubs martindale (EN ISO 5470-2) >500000	NF M2 / BS5852 IS-O+1 / EN1021-1+2 / DIN4102 (Part 1, B2) / MVSS302 / DIN53438 (Part 2)
GROUP 2	PALMA NF by Skal (Eco-Leathers)	Approx. 83% PVC-compound / Approx. 17% CO-knitted fabric	Rubs martindale (EN ISO 5470-2) >500000	NF M1 / BS5852 IS-O+1-5 / DIN4102 (Part 1, B1) / DIN4102 (Part 1, B2) DIN53438 (Part 2) / EN1021-1+2 / MVSS302
	CRISSCROOS by Gabriel	89% Wools of New Zealand / 11% Polyamide	Rubs Martindale (EN ISO 12947-2) > 110.000	BS 5852 Part 1 Q1 Cigarette & match / EN 1021 162 / MED Certificate IMO MSC 307 (88) Annex 1 Part 8
	CANVAS 2 by Kvadrat	90% new wool (worsted)	Rubs martindale (EN ISO 12947) 100.000	EN1021 1.2/ NFD60013/ BS 5852 Part 1/ DIN 4102 B2/ US Cal. Bull. 117-2013
	MOLLY 2 by Kvadrat	100% New Wool (worsted)	Rubs martindale (EN ISO 12947) 75-100.000	EN1021 1.2/ DIN 4102 B2/ US Cal. Bull. 117-2013 / UNI 9175/9176 11M
GROUP 3	LUNA 2 by Gabriel	90% Wools of New Zealand/ 10% Polyamide	Rubs Martindale (EN ISO 12947-2) > 700000	CA TB 117-2013 / EN 1021 162 / BS 5852 Part 1 Q1 Cigarette & match
	STEELCUT TRIO 3 by Kvadrat	90% new wool (worsted)	Rubs martindale (EN ISO 12947) 100.000	EN1021 1.2/ NFD60013/ BS 5852 part 1/ DIN 4102 B2/ US Cal. Bull. 117-2013
GROUP 4	SERIE 900 FUSION by Gracla (Leather)	Full Grain European leather slightly buffed / Pigmented and natural smooth grain / 1,0 - 1,2mm	Rub fastness (EN ISO 11640 / EN ISO 11641): Dry * 4, 800 cycles Note 4-5 Wet * 3 - 4, 200 cycles - Note 4-5	UNE EN 1021 162 / IMO norm MSC61(67), FTP code, Annex 1, Part 8, Resolution A.652 (16)
	SERIE 100 by Gracla (Leather)	Corrected grain / Pigmented and embossed 1,1 / 1,2mm Thickness	Rub fastness (DIN EN ISO 11640): Dry * 4, 1000 cycles Note 4-5 Wet * 4, 200 cycles - Note 4-5	UNE EN 1021-162 / IMO norm MSC61(67), FTP code, Annex 1, Part 8, Resolution A.652 (16)

For further information: / www.gabriel.dk / www.kvadrat.dk / www.curtidosgracia.com / www.hornschuch.com (skal)

WOOD FINISHES : **Finish:** A sprayed layer of solvent color followed by brush wiping, 2 layers of acrylic varnish. **Cleaning:** Wet cloth
FABRIC CLEANING : **Ink:** To be removed first, with absorbent paper. Proceed from the border to the centre. To be cleaned up with alcohol (90°) and washed with water adding a neutral biological detergent. **Oils, grease and sauces:** Stain to be powdered with talc. Wait for a few minutes. Remove talc with a brush and slightly press with a rag using turpentine. Coffee, tea and milk: To be removed with absorbent paper. Then tampon using water along with a neutral biological detergent. **Chewing gum:** To be cooled using a plastic bag full of ice. Chocolate: Tampon with rag using tepid water. Pencil: To be cleaned with 90° alcohol. **Wine, champagne, alcohol:** To be removed as much as possible using absorbent paper. Then tampon using a linen detergent or diluted shampoo following the manufacturer's instructions. **Blood:** To be cleaned using water and a neutral detergent.